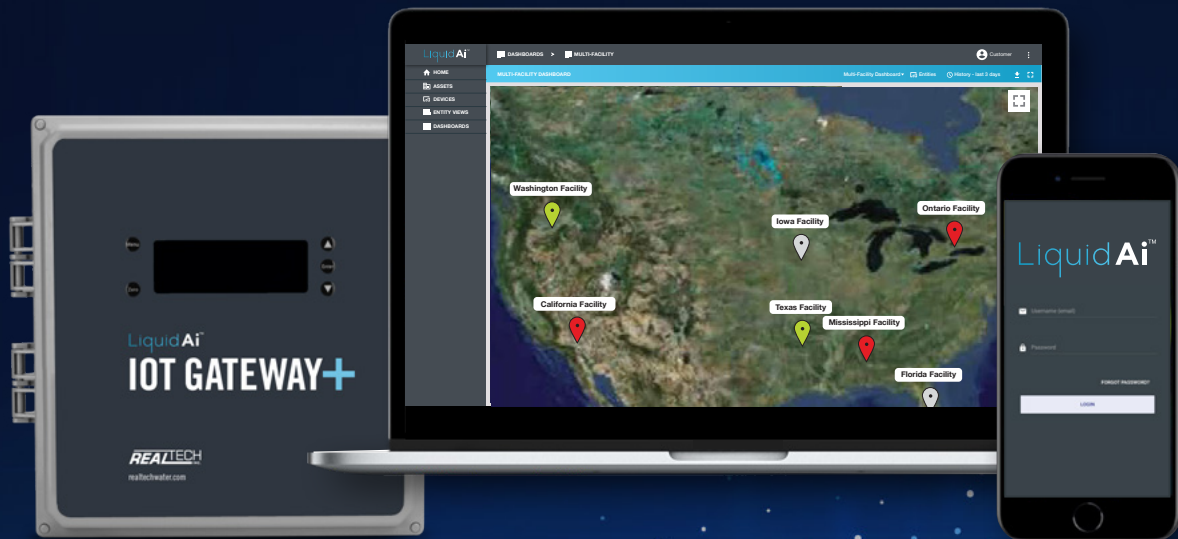


LiquidAi™

# REMOTE MONITORING



# KEEPING YOU CONNECTED SO YOU CAN TAKE CONTROL, & KNOW WHAT'S IN YOUR WATER



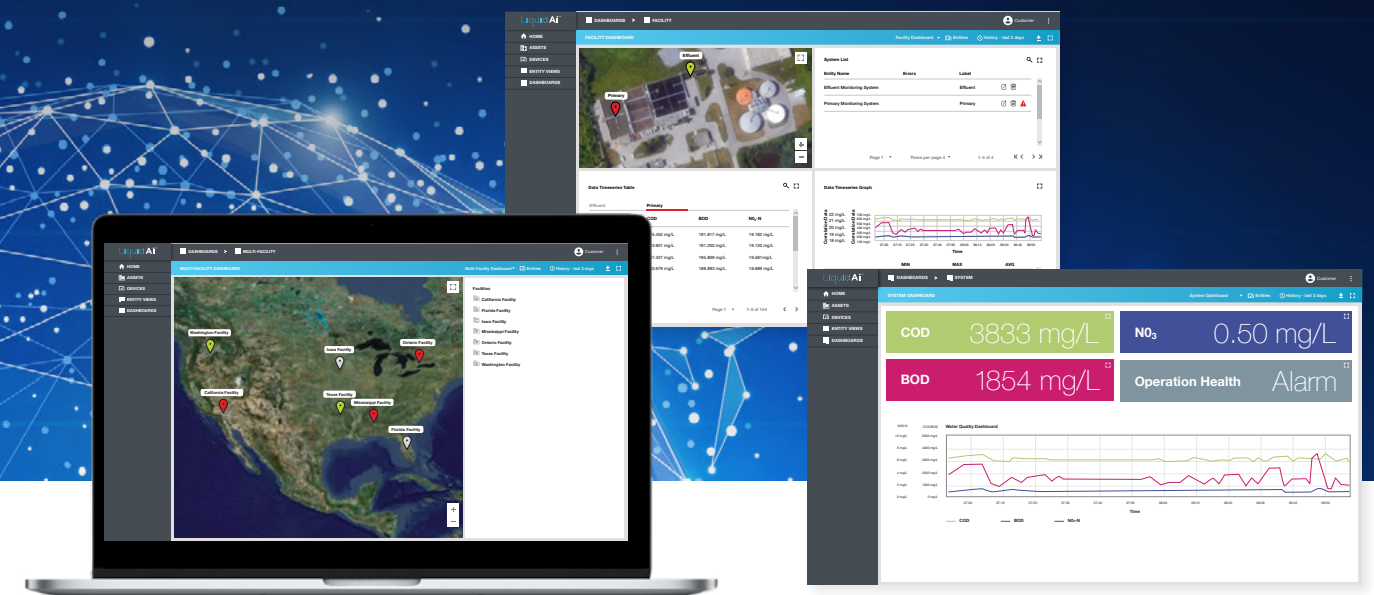
## LIQUID AI IOT GATEWAY+

The Liquid Ai IoT Gateway+ device can collect water quality data from any connected sensor deployed in the field and securely transmits data to the cloud.

Multiple sensors that are already deployed in the field with any analog or digital communication capability can be connected to the IoT Gateway+ for immediate remote monitoring capabilities. The IoT Gateway+ provides the ability for users to easily monitor and manage their sensors remotely. For Real Tech sensors, the IoT Gateway+ provides the ability to remotely configure their Real Tech products. IoT communication options for the IoT Gateway+ includes cellular and wifi. A multi-functional device, the IoT Gateway+ also functions as a local controller with user interface for onsite configuration and display.

### FEATURES

- Simple, plug and play installation
- Multiple sensor integration
- IoT enabled device



## LIQUID AI DASHBOARD

Liquid Ai Dashboard is a user-friendly, secure web-based monitoring visualization tool that allows you to remotely view and manage your water quality monitoring assets all in one powerful platform.

This powerful data visualization and management tool can be customized to ensure your most important information is easily accessible and viewable with options available for multi-facility, facility-level and device-level dashboards. Visualization of data can be further enhanced with flexible graphs that enable you to quickly and simply gain valuable insights on your water quality data in real-time.

### FEATURES

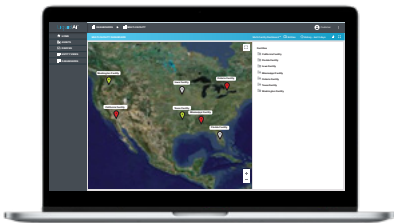
- Remote access to data anywhere, anytime
- Data visualization and management
- Emails and text alerts/alarms
- User friendly, secure web-based platform
- Configurable dashboards and widgets
- Historical data visualization

\* Optional Liquid Ai data analytic services are available as an add-on to bring further meaning to your sensor data, contact Real Tech for more details.



## TECHNICAL SPECIFICATIONS

CHARACTERISTIC	TECHNICAL DATA
<b>LIQUID AI IOT GATEWAY+</b>	
Sensor Connections	Can accept multiple 4-20mA analog inputs, dry contact inputs, and digitals inputs including Modbus (RS485)
Remote Connectivity	Cellular connectivity with Liquid Ai Dashboard via built-in cell modem
Local Connectivity	Modbus (RS485) standard Optional: 4-20mA output, digital I/O, Modbus TCP, WIFI
Data Transmission	Up to once every ten seconds, configurable
Antenna	Internal cellular antenna
Alarms	Display of sensor specific alarms
Data Logging	Onboard data logging, export data via USB (6-month nominal, configuration dependent), remote unlimited data logging through Liquid Ai Dashboard
Local Display	4-line x 20-character backlit LCD with LED indicator
Local Interface	Five push buttons to control a comprehensive hierarchical menu system
Electrical	24VDC power adapter (accepts 90-250VAC 50/60Hz)
Enclosure	NEMA 4X, wall mountable
Dimensions	10.25"H x 10.25"W x 5.5"D
Operating Temp	0 to 45°C (32 to 113°F)
Storage Temp	-20 to 60°C (-4 to 140°F)
Weight	8 lbs
Warranty	2-year limited warranty



## LIQUID AI DASHBOARD

Platform	Web-based access from desktop, tablet or mobile
Data Hosting	Secure Liquid Ai cloud
Display	Multiple user-friendly dashboards, configurable
Communication	Two-way communication with one or more Liquid Ai IoT Gateway+
Alarms	Multi-nodal and multi-condition alarms
Data Export	Comma-separated values (CSV)

\* Technical specifications are subject to change without notice.

### Real Tech Inc.

1150 Champlain Court,  
Whitby, Ontario L1N 6K9 Canada  
TF: 1.877.779.2888 T: 1.905.665.6888  
info@realtechwater.com

**REALTECH**  
INC.