

LIQUID AI DATA MANAGEMENT

WATER QUALITY
MONITORING
SOLUTIONS



FEATURES & BENEFITS

- Intuitive PC software makes data management simple
- Empowers users with model management abilities
- Improves data accuracy and robustness
- Customizable for multiple site-specific models

OVERVIEW

Real Tech's Liquid Ai Data Management PC Software program expands sample and data model (calibrations) management capabilities for our new UV-VIS LED portable field meters, putting the power of data into the hands of the user.

The software allows users the ability to access additional starter data models, update existing data models, and automatically build new custom data models for any site-specific monitoring location desired in one user-friendly program. Users can build upon their site-specific data models over time, increasing accuracy and robustness of measurement.

MUNICIPAL DRINKING WATER
MUNICIPAL WASTEWATER
INDUSTRIAL PROCESS WATER
INDUSTRIAL WASTEWATER

REALTECH
INC.

The Liquid Ai Data Management software consists of 4 primary operating tabs:

DATA MODEL

Allows the user to work with data models with respect to connected devices such as Real Tech's portable field meters. Users can upload a data model from one device and download to another device or load a model from a file on the computers file system and then download to a device, or upload a data model from a device and save to the file system or email to another user for example.

SAMPLES

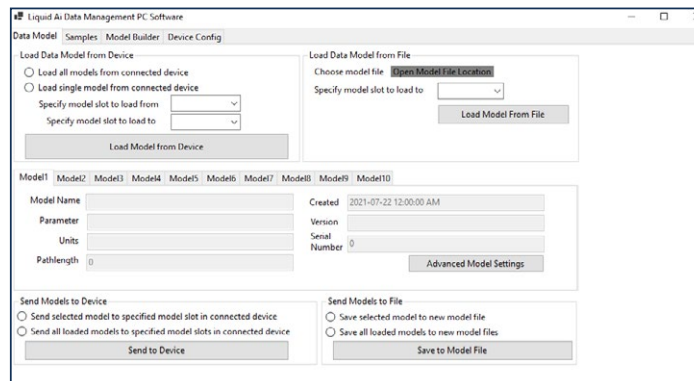
The samples tab allows users to upload stored samples (up to 100) from a connected device. These samples can be viewed sorted, sent to the model builder, exported to a file for record keeping.

MODEL BUILDER

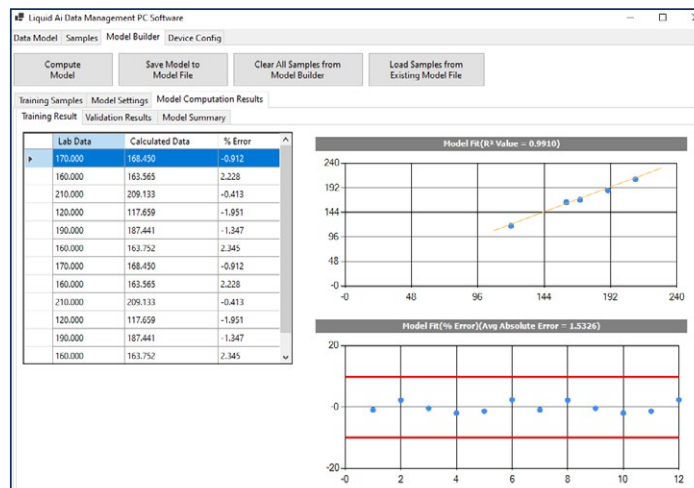
The model builder tab allows a user to open an existing data model file and update and improve it with new samples. Alternatively, if the user can import samples from a connected device via the samples tab or from a previously saved sample file and create a new data model for a specific site or application.

PREFERENCES

The device config tab allows the user to connect to a device, select COM port for connection, install a new license, etc.



Data Model Interface



Model Builder Interface

NAME	PRODUCT #
Liquid Ai Data Management PC Software – Monthly	LAI-214002
Liquid Ai Data Management PC Software – Annual	LAI-214001