

PRODUCT SOLUTIONS



KNOW WHAT'S IN YOUR WATER

Real Tech has been a trusted water quality monitoring solutions provider for the municipal and industrial sectors for well over a decade.

Our focus is on advancing the management of water by providing monitoring solutions that meet your unique detection needs of today and evolving detection needs of tomorrow.



Practical

Solutions that are simple to operate and maintain, allowing for long-term operation in your plant.



Accurate

Superior technology and custom software services enable our solutions to output highly accurate data you can trust and rely on.



Affordable

We offer a comprehensive product line that enables us to provide a solution that meets your budget so you can gain the benefits of real-time monitoring.

UVT
UV254
DOC
TOC
COD
BOD
Nitrate
Nitrite
TSS
Turbidity
Conductivity
pH/ORP
DO
Ammonium
Free Chlorine
Monochloramine
Temperature
THM
HAA
Algae
Chromium VI
Permanganate
Colour
Dyes
Pesticides
Polymers
Hydrocarbons/Oil in Water
Diesel Fuel
BTEX
Surfactants
Soaps
Black Liquor
Hydrogen Sulfide
Benzene
Ozone
Contaminant Alarms
Spectral Fingerprint

A COMPREHENSIVE PRODUCT LINE TO MEET YOUR NEEDS

Real-time up to the minute insights can bring significant value to many water and wastewater applications. The right monitoring solution can help you improve water quality, optimize your treatment processes, save costs and gain greater control.

Our innovative product platform enables us to package a solution that meets your detection needs, environment and budget. Our comprehensive modular solutions enable the configuration that's right for you.

We know. One size doesn't fit all.



METERS

On-the-go portable water quality testing couldn't be easier with Real Tech's patented technology field meters that allow for simple and affordable measurements - anywhere, anytime. Operation is straight forward with accurate and repeatable results obtained in seconds.



ANALYZERS

Up-to-the-minute insights from our continuous analyzers can bring significant benefits to many applications. With onboard LCD display, Real Tech's analyzers provide practical and affordable solutions for real-time monitoring.



SENSORS

Real Tech offers a variety of real-time sensors for many important water quality parameters and compounds.

Patent-pending multiple parameter sensors include BOD, COD, TOC and much more.

Single parameter sensors include pH, conductivity, ammonium, DO, TSS and more.



CONTROLLERS

Easy access to your water quality data from your sensors using one of our plug-and-play controllers.

Choose from two controller options offering different operator interfaces and budgets with a variety of I/O options.



ACCESSORIES

Select from several different sample conditioning and cleaning options to improve performance and lower maintenance.

LiquidAi™

DATA SERVICES

Add on our Liquid Ai data services allowing for unmatched accuracy, detection capabilities and reliability.

METERS

On-the-go portable field water quality measurements couldn't be easier with Real Tech's patented technology that allows for rapid, highly accurate and affordable measurements - anywhere, anytime.



BOD/COD METER

SERIES	BP
PARAMETERS	BOD, COD
DESCRIPTION	Robust, reagent free BOD/COD meter provides simple and affordable organics measurements in seconds, outputted as biochemical oxygen demand (BOD) or chemical oxygen demand (COD).

MULTI-WAVE METER

SERIES	SP
PARAMETERS	Customized to application
DESCRIPTION	Multi-Wave meter provides simple and affordable measurements in seconds. Customizable to output BOD, COD, TOC, DOC, TSS, colour, and much more.

TOC/DOC METER

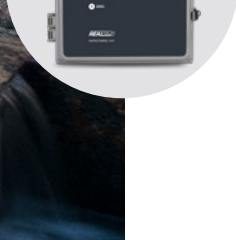
SERIES	OP
PARAMETERS	TOC, DOC
DESCRIPTION	Reagentless TOC/DOC meter provides simple and affordable organics measurements in seconds, outputted as total organic carbon (TOC) or dissolved organic carbon (DOC).

UV254 METER

SERIES	P
PARAMETERS	UVT, UV254
DESCRIPTION	Easy to use, robust portable UV254/UVT field meter provides accurate and repeatable results in seconds, outputted as ultraviolet transmittance (UVT) or UV254.

ANALYZERS

Real Tech's bypass analyzers come complete with built-in display and provide continuous real-time analysis that is practical, accurate and very affordable.



COLOUR ANALYZER

SERIES	C
PARAMETERS	Colour
DESCRIPTION	Bypass colour analyzer with built-in display provides continuous real-time analysis of colour changes in water according to ISO 6271-2016:05.

FREE CHLORINE ANALYZER

SERIES	FC
PARAMETERS	Free Chlorine
DESCRIPTION	Potentiostatic technology free chlorine analyzer provides simple and reliable reagent free continuous measurement.

NITRITE ANALYZER

SERIES	N2
PARAMETERS	Nitrite
DESCRIPTION	Affordable nitrite analyzer provides rapid real-time measurement of high levels of nitrite (NO ₂) in boiler and chiller process water or aquaculture.

TSS ANALYZER

SERIES	T
PARAMETERS	TSS
DESCRIPTION	Bypass TSS analyzer with built-in display provides continuous real-time analysis of TSS changes in water or wastewater.

UV254 ANALYZER

SERIES	M
PARAMETERS	UVT, UV254
DESCRIPTION	Practical UV254/UVT bypass analyzer with built-in display, provides accurate and reliable continuous organics measurement.

SENSORS

Gain real-time up to the minute insights on the water quality parameters that you need the most. No waiting for lab results, no reagents.

Simple. Accurate. Affordable.



BOD/COD SENSORS		CHROMIUM VI SENSORS	COLOUR SENSORS
SERIES	BA-X, BA-S, BL	CRA-X, CRA-S, CRL	CA-X, CA-S, CL, MCA-X, MCA-S, MCL
PARAMETERS	BOD, COD	Chromium VI	Colour, Multiple Colours
DESCRIPTION	BOD/COD patent-pending probe and bypass sensor utilize UV LED technology across multiple wavelengths for simple, affordable and reliable monitoring of organic matter in wastewater.	Chromium VI patent-pending probe and bypass sensor utilize UV LED technology across multiple wavelengths for simple, affordable and reliable chromium VI monitoring in water and wastewater.	Colour and Multi-Colour patent-pending probes and bypass sensors utilize LED technology across multiple wavelengths for simple, affordable and reliable monitoring of colour changes in water and wastewater.



CONDUCTIVITY SENSOR		DO SENSOR	FREE CHLORINE SENSOR
SERIES	CON1000A, CON1000L	DO1000A, DO1000L	FC1000L
PARAMETERS	Conductivity, Salinity	Dissolved Oxygen (DO)	Free Chlorine
DESCRIPTION	Conductivity available in either a submersible probe or bypass sensor option and uses 4 electrodes technology for ultra-low power and low maintenance monitoring.	Optical DO available in either a submersible probe or bypass sensor option. ASTM International Method D888-05 approved technology offers operator low maintenance design.	Potentiostatic technology free chlorine bypass sensor provides simple and reliable reagent free continuous measurement.



AMMONIUM SENSORS		BENZENE SENSORS
SERIES	AMM1000A, AMM1000L	BZA-X, BZA-S, BZL
PARAMETERS	Ammonium	Benzene
DESCRIPTION	Ammonium available in either a submersible probe or bypass sensor option and uses ISE technology for practical and affordable continuous monitoring.	Benzene patent-pending probe and bypass sensor utilize multiple UV LEDs to simply and affordably measure benzene.



SENSORS

Real Tech's comprehensive sensor solutions offer various form factors, with bypass style sensors for pressurized applications and submersible probes for open channel or non-pressurized applications, various light sources to meet detection needs and budgets and multiple path length options to expand range requirements from high purity waters to the harshest of wastewaters.



HYDROCARBONS SENSORS		MULTI-WAVE SENSORS	NITRATE SENSOR
SERIES	HFSA-X, HFSA-S, HFBA-X, HFBA-S, HFL	SA-X, SA-S, SL	NL
PARAMETERS	PAH, OIW	BOD, COD, TOC, DOC, UV254, UVT, TSS, colour, algae, permanganate, chromium VI, O ₃ , THM, HAA, hydrocarbons, oil and water	Nitrate
DESCRIPTION	Hydrocarbons probe and sensor utilizes fluorescence technology method to provide highly selective measurements of Oil and PAH independent of other background organics present in the water.	Multi-wave patent-pending probe and bypass sensor utilize UV LED technology across multiple wavelengths for affordable, low maintenance monitoring of selected water quality parameters.	Bypass UV nitrate optical sensor designed for accurate and reliable real-time monitoring of nitrates in water.



HIGH NITRATE/NITRITE SENSORS		HIGH NITRITE SENSORS	OZONE SENSORS
SERIES	HNA-X, HNA-S, HNL	HN2A-X, HN2A-S, HN2L	O3A-X, O3A-S, O3L
PARAMETERS	Nitrate, nitrite	Nitrite	Ozone
DESCRIPTION	High nitrate/nitrite patent-pending probe and bypass sensor utilize UV LED technology across multiple wavelengths for simple, affordable and reliable monitoring of high concentrations of nitrate and nitrite in water and wastewater.	High nitrite patent-pending probe and bypass sensor utilize UV LED technology across multiple wavelengths for simple, affordable and reliable monitoring of high concentrations of nitrite in water and wastewater.	Ozone patent-pending probe and bypass sensor utilize dual UV LEDs to accurately measure ozone while eliminating interference.



PERMANGANATE SENSOR		pH/ORP SENSOR	SURFACTANTS SENSOR
SERIES	PML	PHORP1000A, PHORP1000L	SFL
PARAMETERS	Permanganate	pH, ORP, Temperature	Surfactants
DESCRIPTION	Permanganate bypass sensor uses LED technology across multiple wavelengths for simple, affordable and reliable low concentration monitoring of residual permanganate in drinking water.	pH available in either a submersible probe or bypass sensor option and uses combined electrode technology for simple and low maintenance monitoring in water.	Bypass Surfactants sensor uses UV absorbance measurement principle for accurate and reliable real-time surfactants monitoring in water or wastewater.



SENSORS

Our innovative technologies ensure the most practical, accurate and affordable solutions to meet your monitoring needs.



SPECTRUM SENSOR	
SERIES	PL
PARAMETERS	BOD, COD, TOC, DOC, UV254, UVT, TSS, nitrate, nitrite, nitrite & nitrate, algae, permanganate, monochloramine, colour, dyes, pesticides, polymers, oil in water, diesel fuel, BTEX, surfactants, soaps, black liquor, H2S, O3, THM, HAA, contaminant alarms, spectral fingerprint, custom alarm
DESCRIPTION	Designed for high precision accuracy in measurement by utilizing full scanning across UV-VIS wavelengths with high resolution, enabling very accurate monitoring of multiple parameters in one bypass sensor.



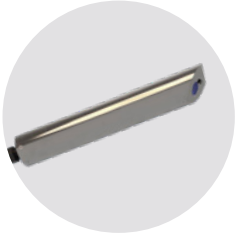
SPECTRUM SENSORS	
SERIES	GA-X, GA-S, GL
PARAMETERS	BOD, COD, TOC, DOC, UV254, UVT, TSS, nitrate, nitrite, permanganate, colour, contaminant alarms, spectral fingerprint, custom alarm
DESCRIPTION	Multiple wavelength UV-VIS probe and bypass sensor provide accurate and reliable continuous monitoring of selected parameters.



TOC SENSORS	
SERIES	OA-X, OA-S, OL
PARAMETERS	TOC, DOC
DESCRIPTION	TOC patent-pending probe and bypass sensor provide reagentless TOC measurement utilizing UV LED technology across multiple wavelengths for detection of organic matter in water and wastewater.



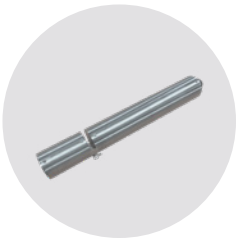
TSS SENSORS	
SERIES	TA-S, TL
PARAMETERS	TSS
DESCRIPTION	TSS submersible probe and bypass sensor use LED technology for affordable, low maintenance monitoring of total suspended solids (TSS) in wastewater.



TURBIDITY SENSOR	
SERIES	TUA
PARAMETERS	Turbidity
DESCRIPTION	Turbidity probe is designed in accordance with the ISO 7027 standard for turbidity measurement using nephelometry. Providing reliable, low maintenance monitoring.



UV254 SENSORS	
SERIES	MA-X, MA-S, ML
PARAMETERS	UV254
DESCRIPTION	UV254 patent-pending submersible probe and bypass sensor utilize dual wavelength UV LED technology for practical, low cost UV254 organics monitoring with turbidity compensation.



UVT SENSOR	
SERIES	S-S
PARAMETERS	UVT
DESCRIPTION	Robust submersible UVT/UV254 probe uses UV LED technology for practical low-cost monitoring.

CONTROLLERS

Real Tech's plug-and-play controllers provide configurability and easy access to your water quality data and user friendly operation. Various communication outputs are available to make integration with your system simple and straightforward.



CONTROLLER PRO

Advanced controller with 12.1" colour LCD, touch screen graphic interface with easy to navigate software.

Multiple sensor and peripheral accessory integration. Includes Modbus TCP.



CONTROLLER

Controller with five push button control and simple to operate, 4-line x 20-character backlit LCD with comprehensive hierarchical menu system.

Multiple sensor and peripheral accessory integration. Include Modbus RTU (RS485), one channel of 4-20mA out and digital I/O.



CONTROLLER LITE

Controller with five push button control and simple to operate, 4-line x 20-character backlit LCD with comprehensive hierarchical menu system.

Multiple sensor and peripheral accessory integration. Include Modbus RTU (RS485).

ACCESSORIES

Real Tech has you covered with a variety of accessory options from automated chemical cleaning or air cleaning to our dual feed solution. With the right configuration, you enjoy fewer maintenance requirements and improved performance over a one-size-fits-all solution.



CLEAN SYSTEMS

Automatic chemical cleaning system designed for bypass sensors to limit flow cell fouling, enhance performance and reduce maintenance.



PUMP CLEAN SYSTEMS

Pumping system and automatic chemical cleaning in one, designed for bypass sensors in non-pressurized water for enhanced performance.



PUMP CLEAN PRO SYSTEMS

Patented system for pumping, purging and automatic chemical cleaning in one designed for bypass sensors to enhance performance.



DUAL FEED SYSTEMS

Designed for bypass sensors to monitor two separate sample streams, ideal for pre and post treatment to track system performance and efficiency.

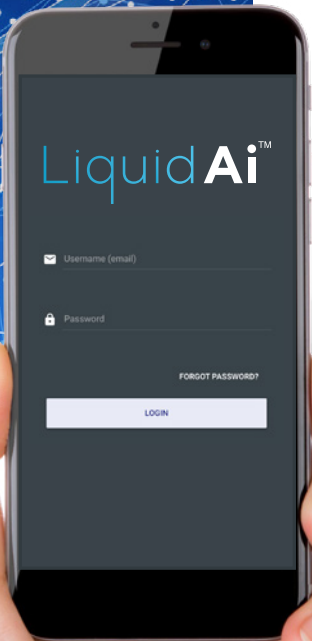


PROBE CLEAN SYSTEM

Automatic compressed air or pressurized water cleaning system designed for submersible probes to minimize maintenance and enhance performance.

DATA SERVICES

Our suite of Liquid Ai data services enables actionable insights. Real Tech has a deep understanding on how to bring intelligence to water quality data, giving you the assurance you need to take control and know what's in your water.



LIQUID AI DATA MANAGEMENT PC SOFTWARE

Utilized with Real Tech's multiple UV/VIS LED portable meter products to expand sample and data model (calibrations) management capabilities. Liquid Ai Data Management PC Software allows users the ability to access additional starter data models, update existing data models and automatically build new custom data models for any site specific monitoring location desired.

Users can build upon their site-specific data models over time, increasing accuracy and robustness of measurement.

LIQUID AI REMOTE MONITORING SERVICE

The Liquid Ai Dashboard provide users the ability to access sensor information from any location, at any time.

Platform enables secure web-based access to information including water quality data, current system status, upcoming maintenance requirements, set text/email alerts and more.

LIQUID AI CALIBRATION MONITORING SERVICE

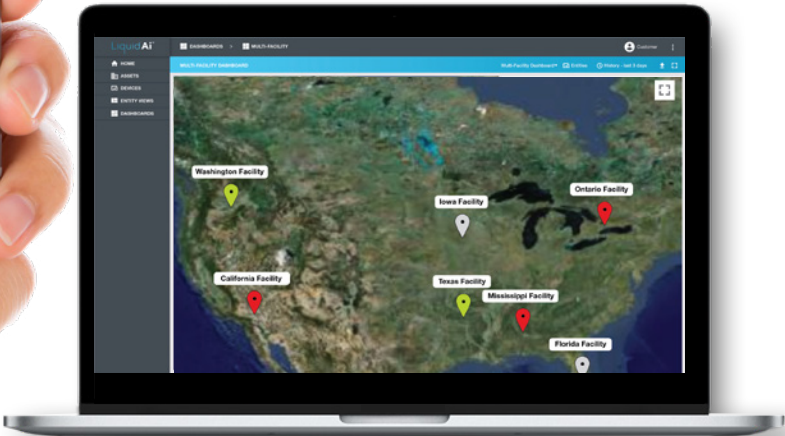
Ongoing or one time custom site specific calibration monitoring service designed to complement Real Tech's data rich sensors.

Enables practical and highly accurate real-time monitoring of water quality parameters and difficult to detect compounds traditionally left for the lab.

LIQUID AI ANOMALY DETECTION

The Liquid Ai Anomaly monitoring enables the ability to detect in real-time site specific anomalies or uncharacteristic events that may not be detected by the current parameters or compounds being monitoring.

The contaminants and/or events detected through our health and event monitoring services provides invaluable insights for plant operations improving real-time intelligence for better decision making.



The BOD monitoring system allows our mill to make more informed, faster decisions to prevent severe discharge events. As a result, this prevents us from the delays caused by manually sampling from various upstream locations. The payback is in the instantaneous information, and it also gives us the potential opportunity to do other optimization applications.

- Bill Murphy, Environmental Coordinator – AV Terrace Bay Inc.

The Real UV254 Analyzer is an invaluable water quality monitoring tool both in the treatment plant and the distribution system. We are able to monitor the removal of organic matter throughout our treatment plant and monitor for organic contaminants in our distribution system. It is both user friendly and nearly maintenance free.

- Connie Schreppel, Director of Water Quality – Mohawk Valley Water Authority

The Real Nitrate Sensor is easy to operate and gives us this much needed information reliably. It makes all the difference for us to access direct support when we need it and service our nitrate analyzer onsite to minimize downtime. Real Tech's service has been next level in helping us achieve that. I would highly recommend Real Tech to anyone in need of a nitrate analyzer.

- Joe Keddy, Superintendent – Village of Port Williams Public Works

Top notch company! We have the inline Real UV254 Analyzer with the auto cleaning that monitors our raw and finished water. Works great!

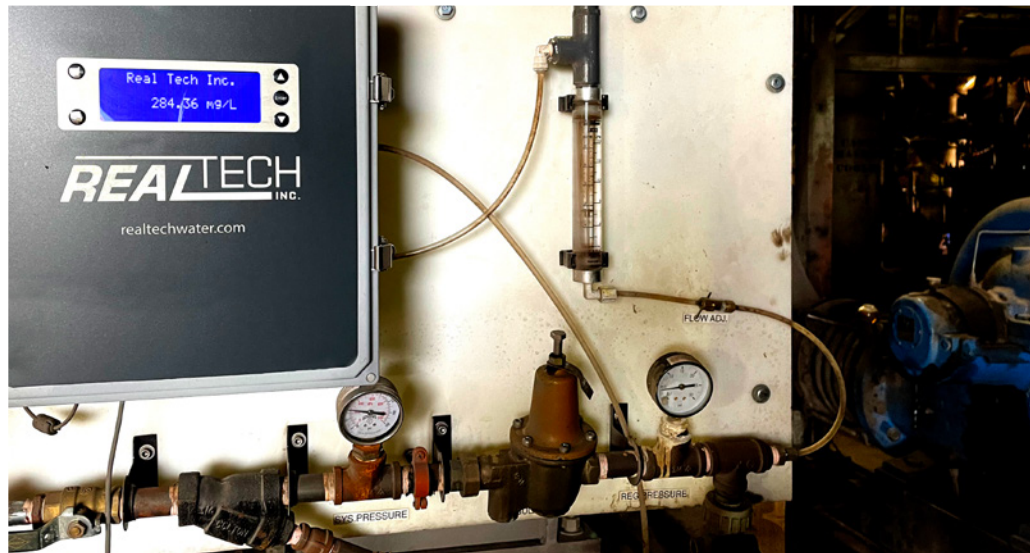
- Rick McKnight, Water Plant Supervisor – Ridgway Water Plant

We are very happy with the Real Tech UV254 meter. The instrument is plug and play with incredible ease of use. It's ready to go within minutes, and durable for quick testing around our plant. Test to test the results are consistent, helping our plant track organics removal throughout the process.

- Helder Cabral, Laboratory Manager, Water Supply – Providence Water



FROM WASTEWATER
TO HIGH PURITY
WATER APPLICATIONS,
WE HAVE A SOLUTION
THAT'S RIGHT FOR YOU.





EVERY MINUTE OF
EVERY DAY

WHERE THERE IS WATER
WE ARE THERE

1000's of clients in over 50 countries
trust and rely on Real Tech solutions to
meet their water quality monitoring needs.

Discover more about our products today:
realtechwater.com/products

Real Tech Inc.

1150 Champlain Court,
Whitby, Ontario L1N 6K9 Canada
TF: 1.877.779.2888 T: 1.905.665.6888
info@realtechwater.com

REALTECH
INC.