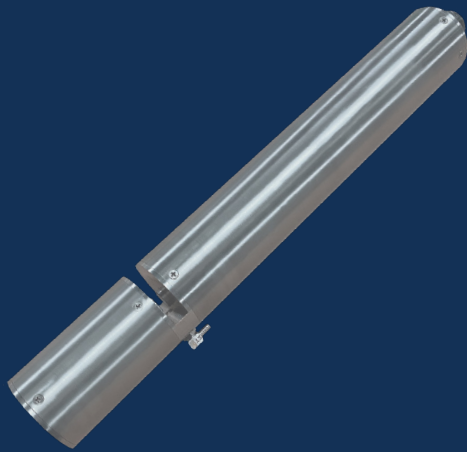


TSS PROBE

TA-S SERIES



FEATURES & BENEFITS

- Affordable real-time TSS monitoring
- Robust submersible probe for in-situ measurement
- Operator friendly, low maintenance design
- Long-life LED light source
- Simple to install and operate

MUNICIPAL WASTEWATER
INDUSTRIAL WASTEWATER

WATER QUALITY
MONITORING
SOLUTIONS

REAL-TIME MONITORING SOLUTION

TSS Probe

Real Tech's robust TSS submersible probe provides affordable real-time measurement of changes in total suspended solids (TSS) and/or particle concentration in wastewater. Designed to meet the needs of many monitoring applications, the TA series offers multiple sensor path length selections for the desired measurement range.

Controllers and Accessories

Our innovative modular product platform ensures our clients gain the real-time water quality monitoring system that meets their specific demands and budget. With multiple controller and accessory options available such as automatic compressed air cleaning systems that lower maintenance while improving system performance, Real Tech provides a total solution for all of your unique water quality needs.

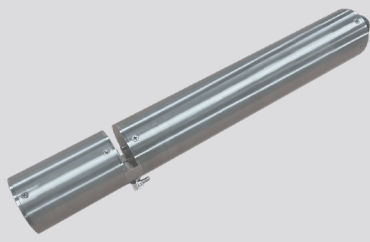
Liquid Ai Compatible

Our Liquid Ai data services complement our real-time water quality monitoring systems. Calibration Health Monitoring ensures accuracy and reliability are maintained so our clients can have the utmost confidence in their results, while our Remote Monitoring platform enables access to data anywhere, anytime.

MEASUREMENT PRINCIPLE

Real Tech's TSS probe utilizes near infrared light for measurement to minimize or eliminate interference from other absorbing compounds. Benefiting from Real Tech's innovative LED technology, accurate and stable measurements are obtained with minimal maintenance or operator intervention.

REALTECH
INC.



TSS PROBE SPECIFICATIONS

CHARACTERISTIC	TECHNICAL DATA
Path Length	1, 2, 4, 10 mm
Parameters	Total suspended solids (TSS)
Range	Depends on model selected. Refer to range chart.
Units	mg/L
Sampling Time	10 seconds
Calibration	Factory calibrated. Field adjustment of calibration is possible.
Cleaning	Automatic compressed air or pressurized water cleaning with optional Probe Clean System
Self-Diagnostics	Detection and diagnosis of internal system fault
Alarms	Continuous detection of leaks, lamp output, humidity, temperature and electrical fault
Humidity Control	Humidity sensor with desiccant pack
Wavelength	Near infrared (NIR)
Light Source	LED
Electrical/Comm.	From controller
Pressure Rating	15 PSI
Operating Temp.	0 to 45°C (32 to 113°F)
Housing Material	Stainless steel (SS 316)
Wetted Materials	Epoxy, Sapphire, SS 316, Viton
Weight	2.5kg (5.25lb)**
Ingress Protection Type	IPX8
Dimensions	15" H x 2.0" Diameter
Warranty	2-year limited warranty (Extended care packages available)

* Technical Specifications are subject to change without notice.

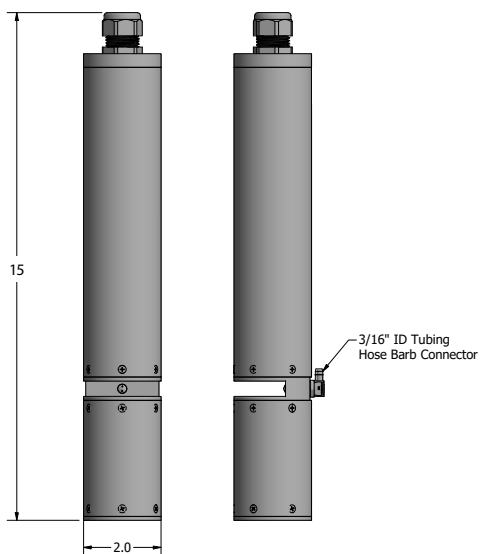
* Operating (water) temperature absolute maximum 55°C (131°F). Instrument performance reduced when operating outside recommended operating range. Contact Real Tech to verify application.

** Weight does not include cable. Cable weight: 0.70kg (1.55lb).

DIMENSIONS

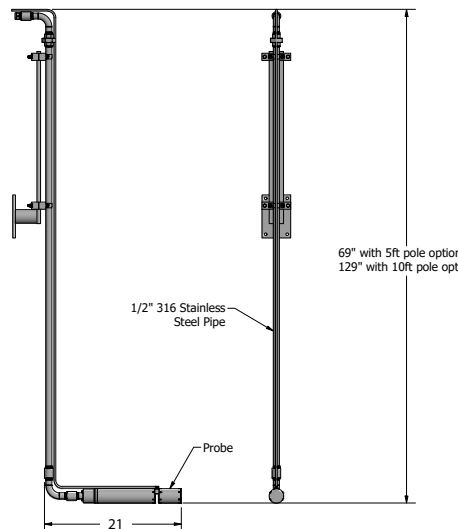
The TSS probe is a submersible instrument installed directly in-situ using a pole mounting kit or chain mount.

DIMENSIONS FOR TSS PROBE



MOUNTING FOR TSS PROBE

Pole mount



Chain mount



PROBE MODELS & RANGE

Includes TSS probe sensor and 35 feet of communication cable.
Controller, mounting kit and cleaning system sold separately.

MODEL#	PATH LENGTH	TSS (mg/L)
TA-S2010	1 mm	0 - 20,000
TA-S2020	2 mm	0 - 10,000
TA-S2040	4 mm	0 - 5,000
TA-S2100	10 mm	0 - 2,000

* Stated ranges are approximate, dependent on industry, site and application - contact Real Tech to confirm model selection

CONTROLLERS

Controllers include proprietary inputs for Real Tech sensors and accessories.

PRODUCT #	NAME	DESCRIPTION
S-229005	Real Controller Lite	Wall mounted controller with 4-line x 20-character back lit LCD display. Includes modbus RTU (RS485)
S-169000	Real Controller	Wall mounted controller with 4-line x 20-character back lit LCD display. Includes modbus RTU (RS485), 1 channel of 4-20 mA out and digital I/O module
S-11TPC	Real Controller Pro	Wall mounted controller with 12.1" colour LCD touch panel PC interface (PC inside cabinet model). Includes Modbus TCP
S-11TPCD	Real Controller Pro	Wall mounted controller with 12.1" colour LCD touch panel PC interface (PC external on door model). Includes Modbus TCP

ACCESSORIES

PRODUCT #	NAME	DESCRIPTION
S-228070	Probe Clean System	Cleaning valve module requires on-site compressed air or pressured water for automatic probe cleaning
S-228080	Compressed Air System	Compressor for air cleaning when compressed air not available on-site
S-219081	Probe Mounting Kit I	Provides secure mounting attachment for stainless steel probe to a tank wall or open channel wall. No pole included.
S-219082	Probe Mounting Kit II	Provides secure mounting attachment for stainless steel probe to a tank wall or open channel wall. 5' pole included.
S-219083	Probe Mounting Kit III	Provides secure mounting attachment for stainless steel probe to a tank wall or open channel wall. 10' pole included.
S-229085	Chain Mount	Stainless steel chain for mounting probe in open channel

Real Tech Inc.

1150 Champlain Court,
Whitby, Ontario L1N 6K9 Canada
TF: 1.877.779.2888 T: 1.905.665.6888
info@realtechwater.com

REALTECH
INC.