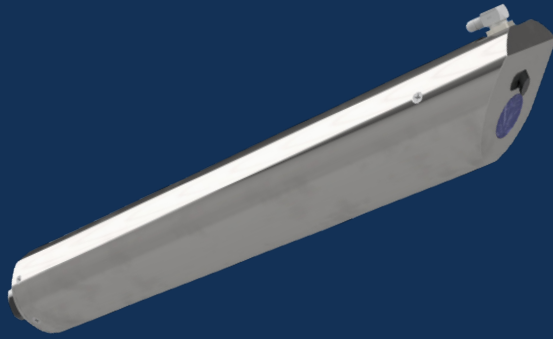


HYDROCARBONS PROBE

HFSA / HFBA SERIES



FEATURES & BENEFITS

- Affordable real-time hydrocarbons monitoring for industrial and municipal wastewater, and surface water applications
- Uses UV fluorescence measurement method
- Provides measurement in PAH and Oil-in-Water (OIW)
- Robust submersible probe with titanium or stainless steel housing
- Long life UV LED light source
- Operator friendly, low maintenance
- Simple to install and operate
- C1D1 certification for explosive environments optional (e.g., municipal plant headworks)

MUNICIPAL DRINKING WATER
SURFACE WATER MONITORING
MUNICIPAL WASTEWATER
INDUSTRIAL PROCESS WATER
INDUSTRIAL WASTEWATER

WATER QUALITY
MONITORING
SOLUTIONS

REAL-TIME MONITORING SOLUTION

Hydrocarbons Probe

Real Tech's robust Hydrocarbons submersible probe provides affordable real-time measurements of Oil and PAH in water and is especially suited to monitoring municipal and industrial wastewater, surface water, raw water intake, as well as marine applications. The probe's rugged design is built to withstand harsh environments especially found in industrial and municipal wastewater applications with options for a stainless steel or titanium body.

Controllers and Accessories

Our innovative modular product platform ensures our clients gain the real-time water quality monitoring system that meets their specific demands and budget. With multiple controller and accessory options available such as automatic compressed air and pressurized water cleaning systems that lower maintenance while improving system performance, Real Tech provides a total solution for all of your unique water quality needs.

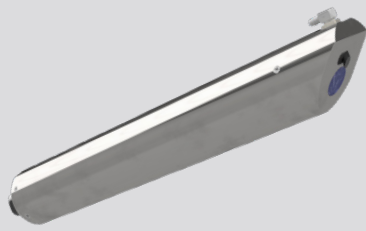
Liquid Ai Compatible

Our Liquid Ai data services complement our real-time quality monitoring systems. Calibration Health Monitoring ensures accuracy and reliability are maintained so our clients can have the utmost confidence in their results, while our Remote Monitoring platform enables access to data anywhere, anytime.

MEASUREMENT PRINCIPLE

Real Tech's Hydrocarbons probe uses the UV fluorescence method to provide highly selective measurements of Oil and PAH independent of other background organics present in the water. The probe uses a 255nm UV LED for the excitation wavelength and measures resulting fluorescence emission at 360nm. Automatic compensation is performed for any changes in UV LED output over time along with temperature changes. The HFSA model utilizes UV 90 degree fluorescence providing higher accuracy in field conditions that have lower organics and suspended solids concentration. The HFBA model utilizes UV back fluorescence which is ideal for detection within high strength wastewater applications.

REALTECH
INC.



HYDROCARBONS PROBE SPECIFICATIONS

| CHARACTERISTIC | TECHNICAL DATA | |
|-------------------------|---|--------------------------------|
| | HFSA-X / HFBA-X | HFSA-S / HFBA-S |
| Model | HFSA-X / HFBA-X | HFSA-S / HFBA-S |
| Measurement Method | UV Fluorescence | |
| Parameters | PAH, OIW | |
| Units | ppb, ppm, µg/L, mg/L | |
| Range | 0-5000 ppb PAH, 0.1 - 150 ppm oil | |
| Reproducibility | ± 1 ppb PAH | |
| Sampling Time | 10 seconds | |
| Calibration | Automatic compensation for LED output and temperature change | |
| Cleaning | Automatic compressed air or pressurized water cleaning with optional Probe Clean System | |
| Self-Diagnostics | Detection and diagnosis of internal system fault | |
| Alarms | Continuous detection of leaks, lamp output, humidity, temperature and electrical fault | |
| Humidity Control | Humidity sensor with desiccant pack | |
| Wavelength | 255nm excitation 360nm emission | |
| Light Source | UV LED | |
| Electrical/Comm. | From controller | |
| Pressure Rating | 15 PSI | |
| Operating Temp. | 0 to 50°C (32 to 122°F)* | |
| Housing Material | Titanium (Grade 2) | Stainless steel (SS 316) |
| Wetted Materials | Titanium, Epoxy, Sapphire, SS 316, Viton | Epoxy, Sapphire, SS 316, Viton |
| Weight | 1.5kg (3.31lb)** | 2.5kg (5.25lb)** |
| Ingress Protection Type | IPX8 | |
| Dimensions | 14.76" H x 2.0" Diameter | |
| Warranty | 2-year limited warranty (Extended care packages available) | |

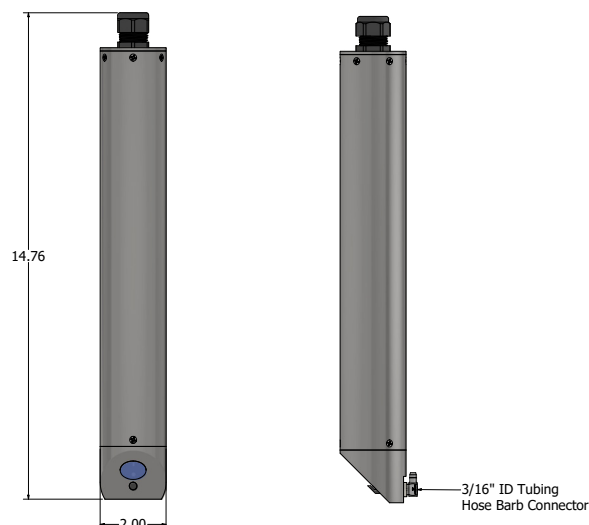
Technical Specifications are subject to change without notice.

* Operating (water) temperature absolute maximum 55°C (131°F). Instrument performance reduced when operating outside recommended operating range. Contact Real Tech to verify application.

** Weight does not include cable. Cable weight: 0.70kg (1.55lb).

DIMENSIONS FOR HYDROCARBONS PROBE

Available mounting accessories include fixed pole mounting kit and chain mounting kit



CONTROLLERS

Controllers include proprietary inputs for Real Tech sensors and accessories.

| PRODUCT # | NAME | DESCRIPTION |
|-----------|----------------------|---|
| S-229005 | Real Controller Lite | Wall mounted controller with 4-line x 20-character back lit LCD display. Includes modbus RTU (RS485) |
| S-169000 | Real Controller | Wall mounted controller with 4-line x 20-character back lit LCD display. Includes modbus RTU (RS485), 1 channel of 4-20 mA out and digital I/O module |
| S-11TPC | Real Controller Pro | Wall mounted controller with 12.1" colour LCD touch panel PC interface (PC inside cabinet model). Includes Modbus TCP |
| S-11TPCD | Real Controller Pro | Wall mounted controller with 12.1" colour LCD touch panel PC interface (PC external on door model). Includes Modbus TCP |

ACCESSORIES

| PRODUCT # | NAME | DESCRIPTION |
|-----------|------------------------|---|
| S-228070 | Probe Clean System | Cleaning valve module requires on-site compressed air or pressured water for automatic probe cleaning |
| S-228080 | Compressed Air System | Compressor for air cleaning when compressed air not available on-site |
| S-219081 | Probe Mounting Kit I | Provides secure mounting attachment for titanium or stainless steel probe to a tank wall or open channel wall. No pole included. |
| S-219082 | Probe Mounting Kit II | Provides secure mounting attachment for titanium or stainless steel probe to a tank wall or open channel wall. 5' pole included. |
| S-219083 | Probe Mounting Kit III | Provides secure mounting attachment for titanium or stainless steel probe to a tank wall or open channel wall. 10' pole included. |
| S-229085 | Chain Mount | Stainless steel chain for mounting probe in open channel |

Real Tech Inc.

1150 Champlain Court,
Whitby, Ontario L1N 6K9 Canada
TF: 1.877.779.2888 T: 1.905.665.6888
info@realtechwater.com

